

# ISOKERN FIREPLACE AND CHIMNEY SPECIFICATIONS:

## I. MANUFACTURER:

A. Earthcore Industries, LLC, Jacksonville FL (Telephone 800-642-2920)

## II. PRODUCT DESCRIPTION:

A. Modular refractory precast fireplace and chimney components.

1. Designed for field assembly as a fireplace and chimney unit.
2. All interlocking parts necessary for assembly of a complete firebox and smoke dome.
3. Interlocking double module chimney components (DM).

## III. MATERIALS:

- A. Light weight concrete of a proprietary mixture of Icelandic volcanic pumice aggregate and cement for precast firebox, chimney block and flue liner components.
1. Compressive Strength: Firebox and Chimney Block: 972 psi.
  2. Compressive Strength: Flue Liner: 1175 psi.
- B. Premixed (dry) EARTHCORE ADHESIVE
1. Tested per ASTM C109, ASTM C307, and ANSI 118.4.
  2. Standard 1 1/8" medium duty refractory brick to line firebox interior.
- C. Standard cast iron poker-style damper (optional top mount or in-line damper available).

## IV. INSTALLATION:

- A. Reference manufacturer's installation instructions for standard configurations, weights, sizes and installation details.
- B. Suitable masonry foundation and noncombustible hearth extensions must be provided.
- C. Unit to be assembled on site per manufacturer's illustrated instructions.
1. Premixed EARTHCORE ADHESIVE is used at all joints between components.
2. Firebox to be lined with a minimum 1 1/8" rated firebrick.
- D. Standard fireplace and chimney units listed for "zero clearance" to uninsulated wood framing members.
- E. A 1/2" minimum clearance envelope to combustible materials is recommended.
- F. A 3" minimum clearance envelope to insulation required.

## V. CERTIFICATION:

A. Warnock Hersey/Intertek Testing Services Report No. 3159656MID-008.

B. Meets or exceeds U.L. 103HT; U.L. 127-08; ULC S610-87; ANSI 2.11.

## VI. CODE COMPLIANCE:

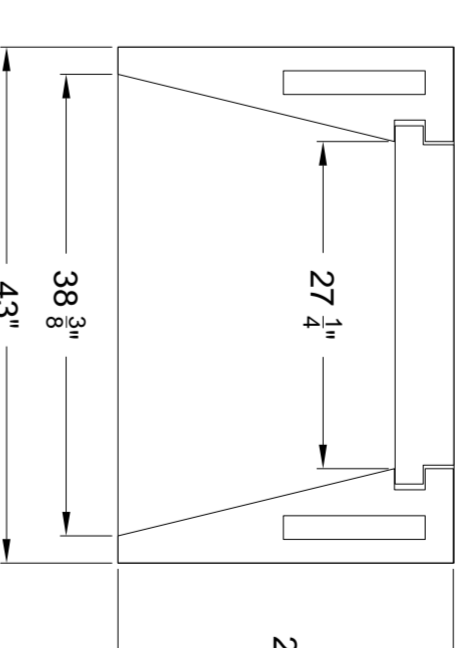
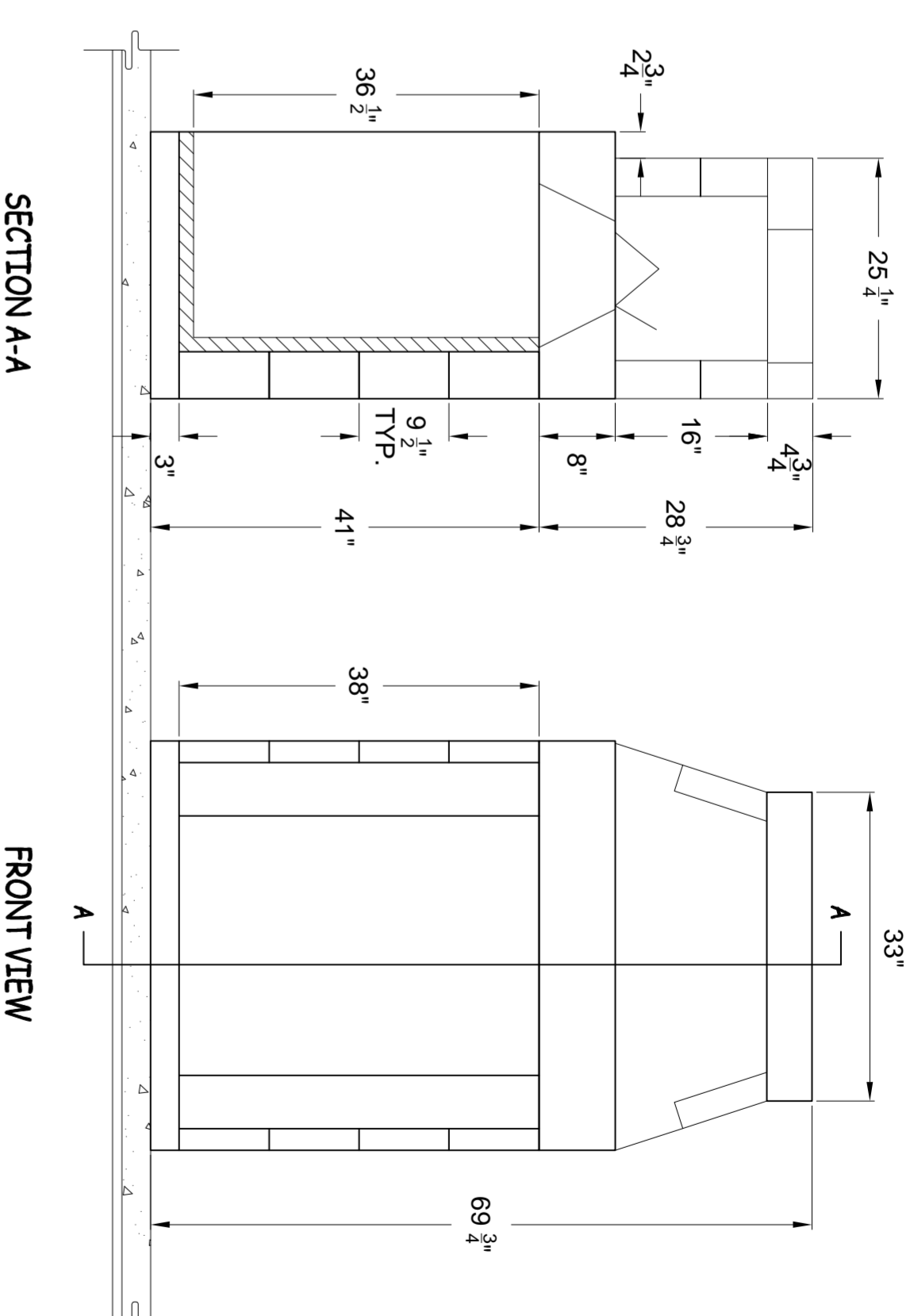
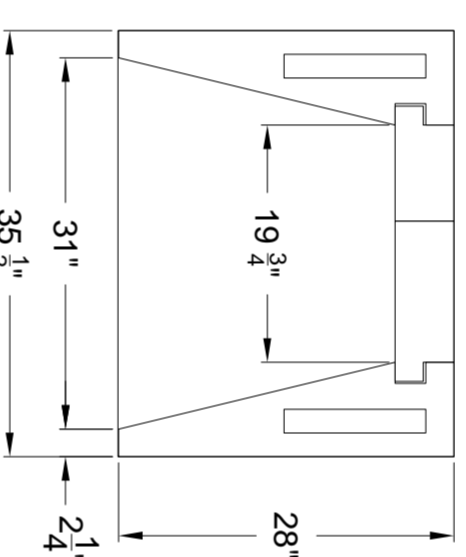
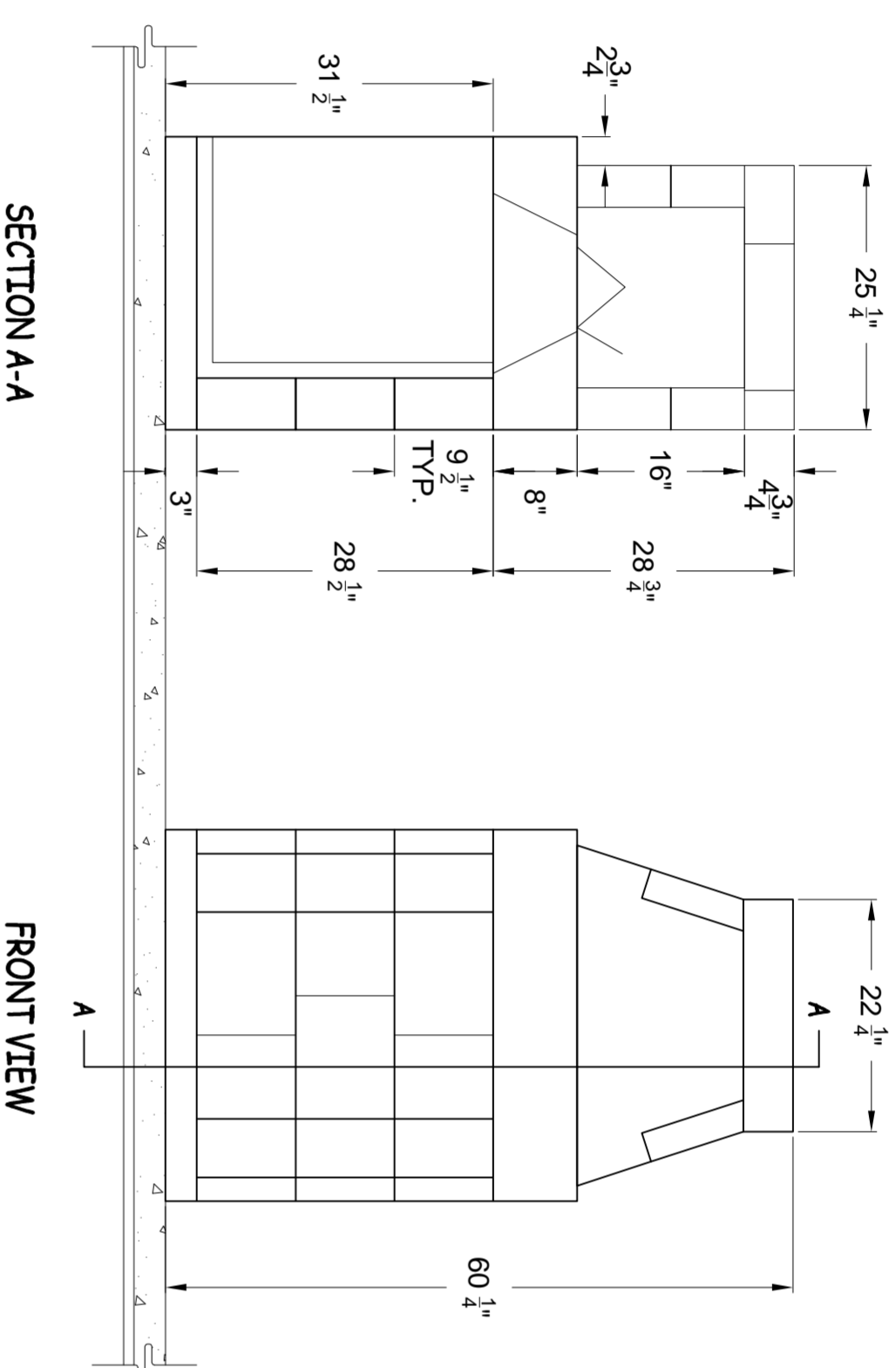
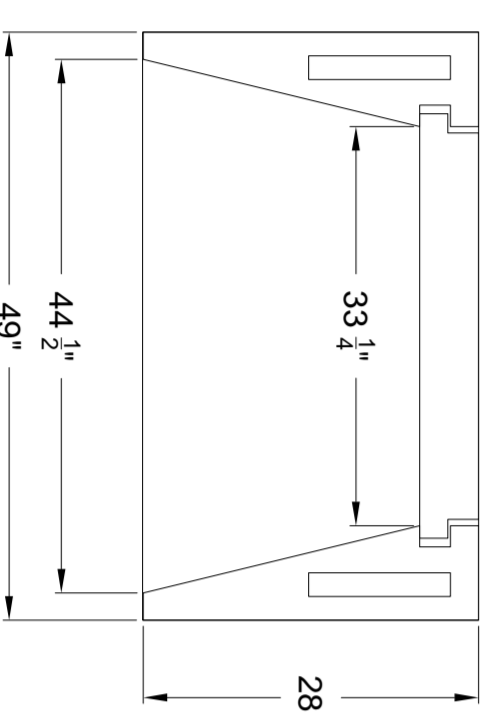
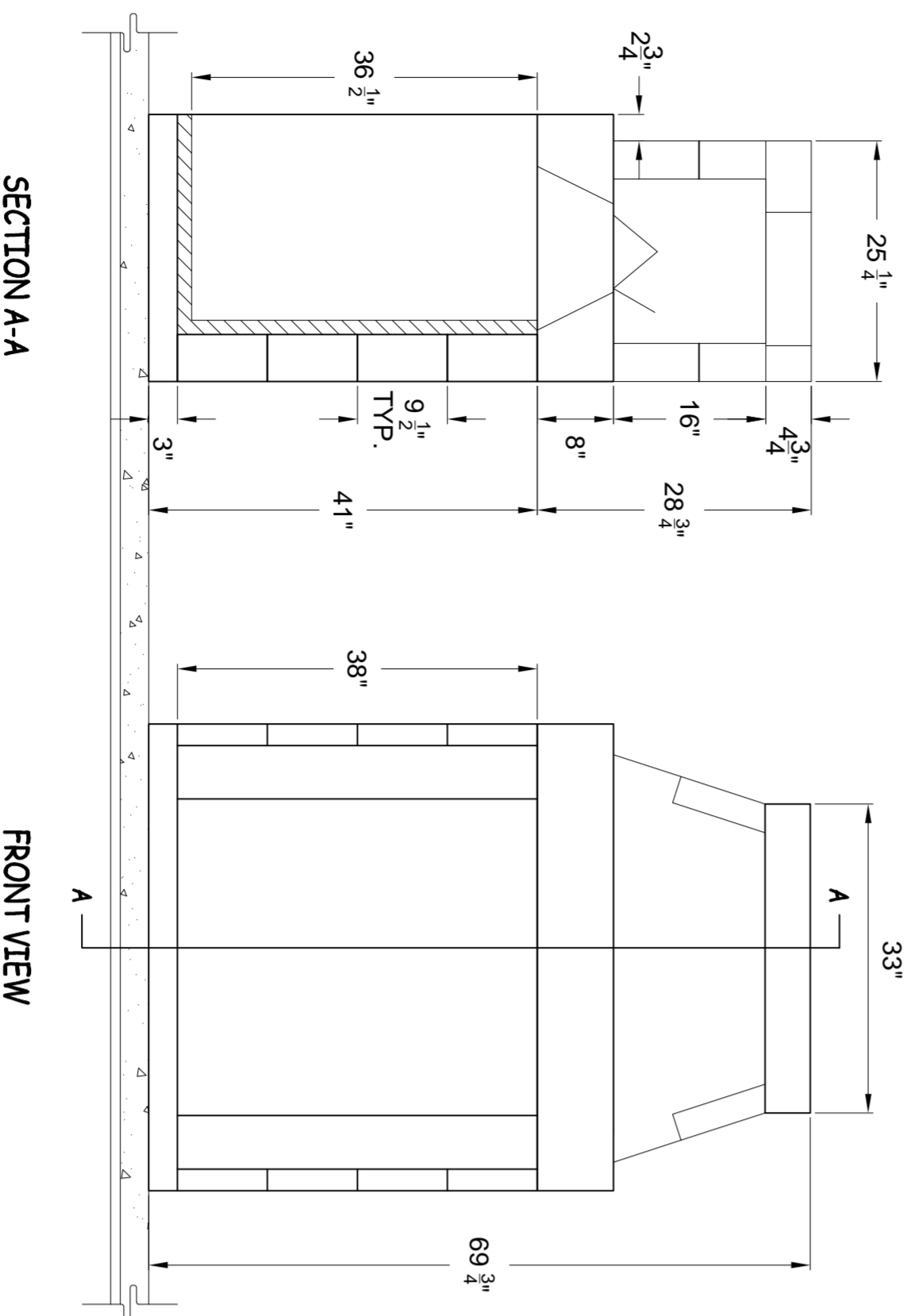
A. ICC. No. ESR-2316 / LARR #25483/ MEA N.Y.C. 241-90-E

B. Standard fireplace and chimney units listed for "zero clearance" to uninsulated wood framing members.

Note: Isokern components are a natural material and slight variations in dimensions may occur. These should be no more than 8".

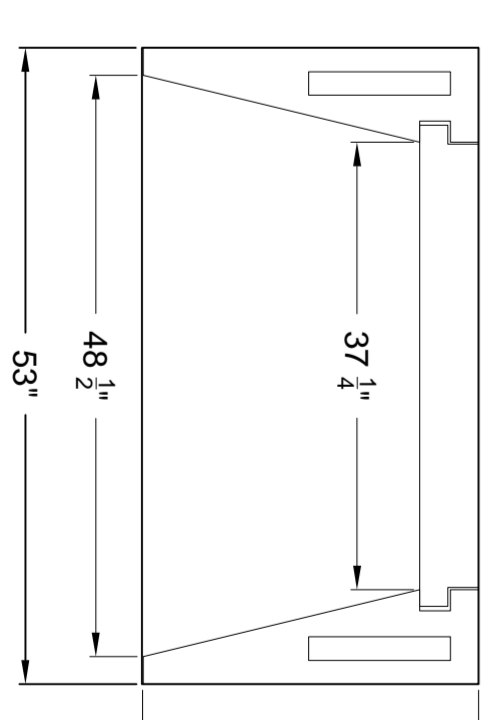
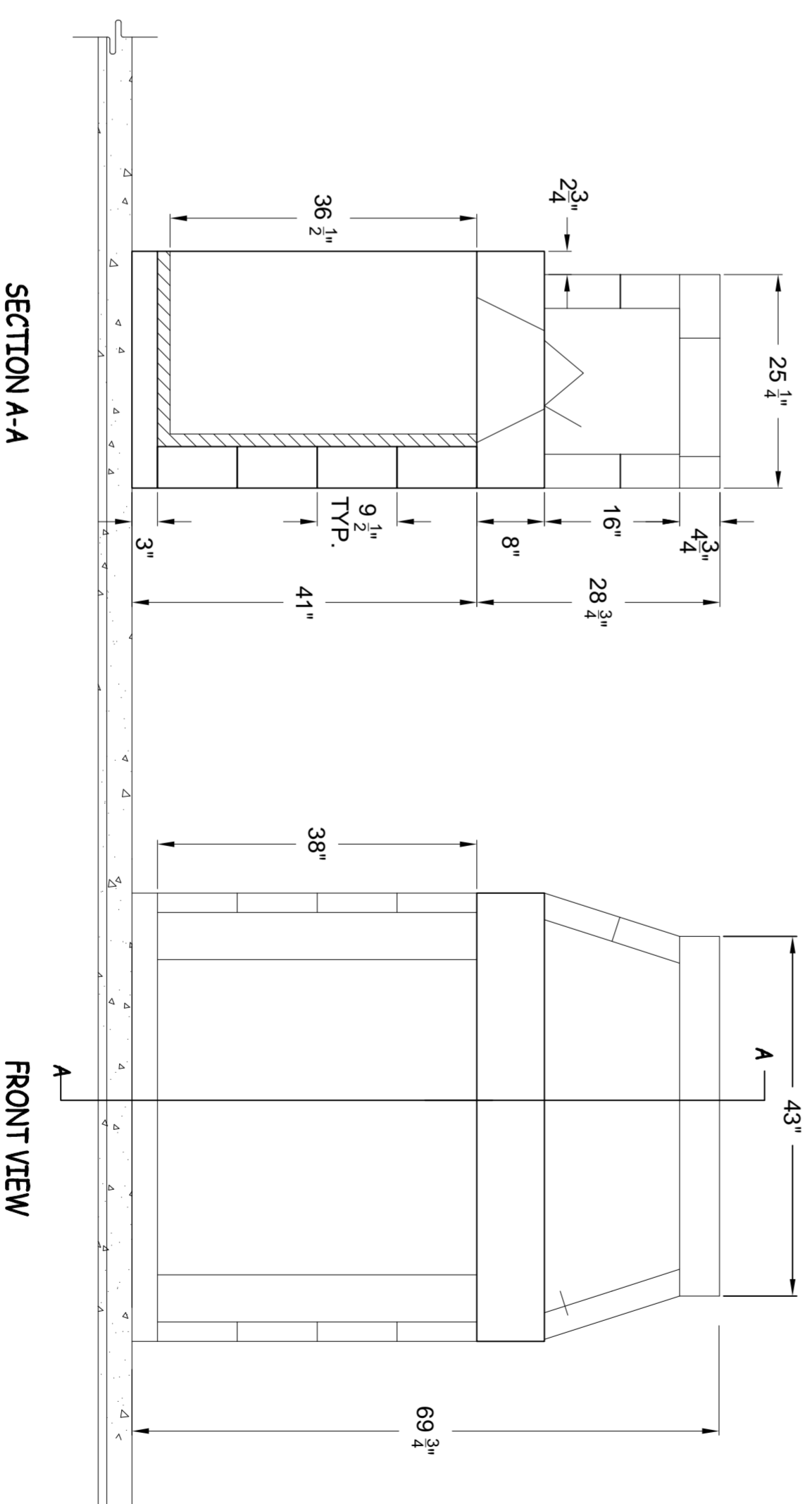
## PLAN, SECTION and ELEVATION of ISOKERN 28 FIREPLACE

SCALE 3/4" = 1'-0"



## PLAN, SECTION and ELEVATION of ISOKERN 36 FIREPLACE

SCALE 3/4" = 1'-0"



## PLAN, SECTION and ELEVATION of ISOKERN 48 FIREPLACE

SCALE 3/4" = 1'-0"

REVISIONS BY

6899 PHILLIPS INDUSTRIAL BLVD  
JACKSONVILLE, FLORIDA 32256  
TEL (904) 363-3417  
FAX (904) 363-3408  
www.isokern.net

**ISOKERN**  
Fireplaces and Chimney Systems

A PRODUCT OF EARTHCORE INDUSTRIES

MAGNUM  
DETAILS/  
DIMENSIONS

DESIGNED BY  
JMK  
RELEASE DATE  
09/01/09  
SCALE  
3/4" = 1'-0"  
REVNO

SHEET

M 1.0