

ISOKERN FIREPLACE AND CHIMNEY SPECIFICATIONS:

I. MANUFACTURER:

A. Earthcore Industries, LLC., Jacksonville, FL (Telephone 800-642-2920)

II. PRODUCT DESCRIPTION:

- A. Modular refractory precast fireplace and chimney components.
1. Designed for field assembly as a fireplace and chimney unit.
2. All interlocking parts necessary for assembly of a complete firebox and smoke dome.
3. Interlocking double module chimney components (DM).

III. MATERIALS:

- A. Light weight concrete of a proprietary mixture of Icelandic volcanic pumice aggregate and cement for precast firebox, chimney block and flue liner components.
 1. Compressive Strength: Firebox and Chimney Block: 972 psi.
 2. Compressive Strength: Flue Liner: 1175 psi.
- B. Premixed (dry) EARTHCORE ADHESIVE.
 1. Tested per ASTM C109, ASTM C307, and ANSI 118.4.
- C. Standard 1 1/8" medium duty refractory brick to line firebox interior.
- D. Standard cast iron poker-style damper (optional top mount or in-line damper available).

IV. INSTALLATION:

- A. Reference manufacturer's installation instructions for standard configurations, weights, sizes and installation details.
- B. Suitable masonry foundation and noncombustible hearth extensions must be provided.
- C. Unit to be assembled on site per manufacturer's illustrated instructions.
 1. Premixed EARTHCORE ADHESIVE is used at all joints between components.
 2. Firebox to be lined with a minimum 1 1/8" rated firebrick.
- D. Standard fireplace and chimney units listed for "zero clearance" to uninsulated wood framing members.
- E. A 1 1/2" minimum clearance envelope to combustible materials is recommended.
- F. A 3" minimum clearance envelope to insulation required.

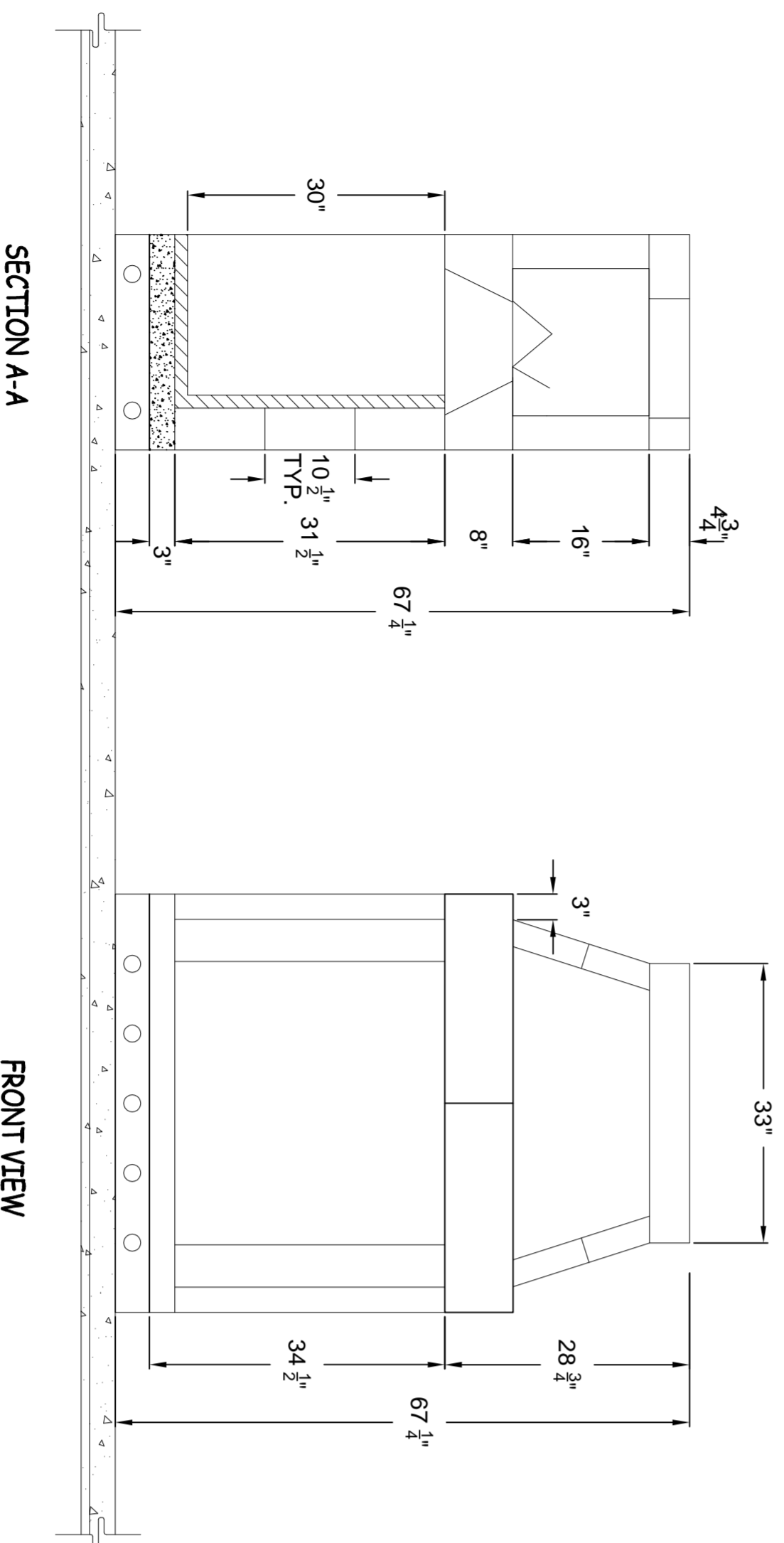
V. CERTIFICATION:

- A. Warnock Hersey/Intertek Testing Services Report No. 3159656MID-008.
- B. Meets or exceeds U.L. 103HT; U.L. 127-08; ULC S610-87; ANSI 2.11.

VI. CODE COMPLIANCE:

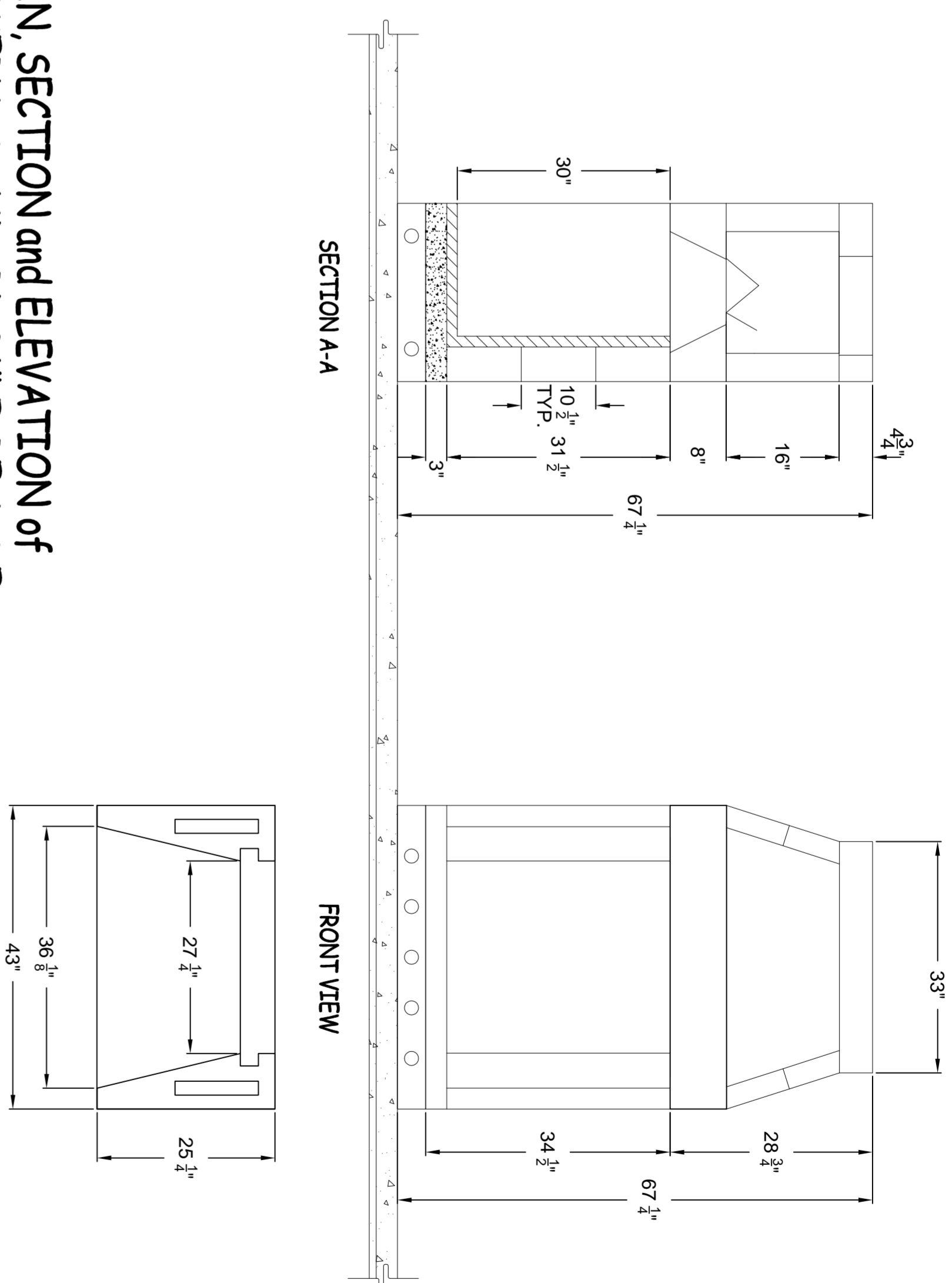
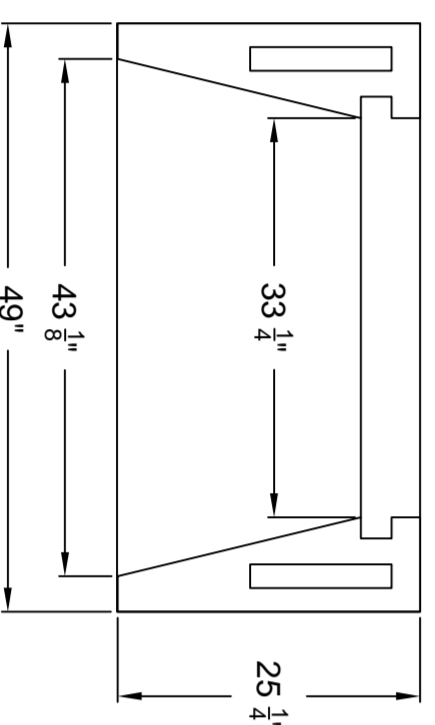
- A. ICC, No. ESR-2316 / LARR #25483 / MEA N.Y.C. 241-90-E.
- B. Standard fireplace and chimney units listed for "zero clearance" to uninsulated wood framing members.

Note: Isokern components are a natural material and slight variations in dimensions may occur. These should be no more than $\frac{1}{8}$ ".



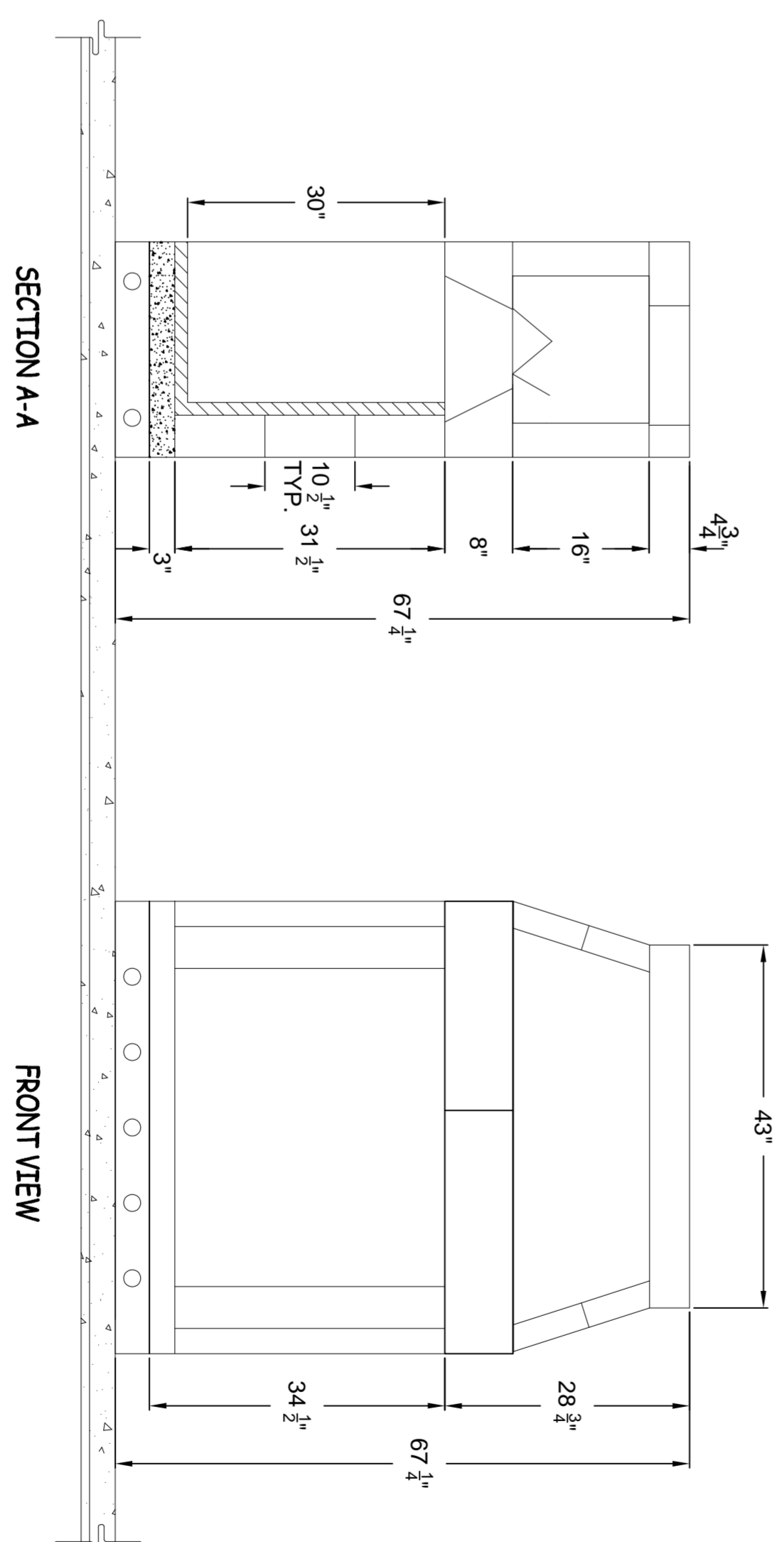
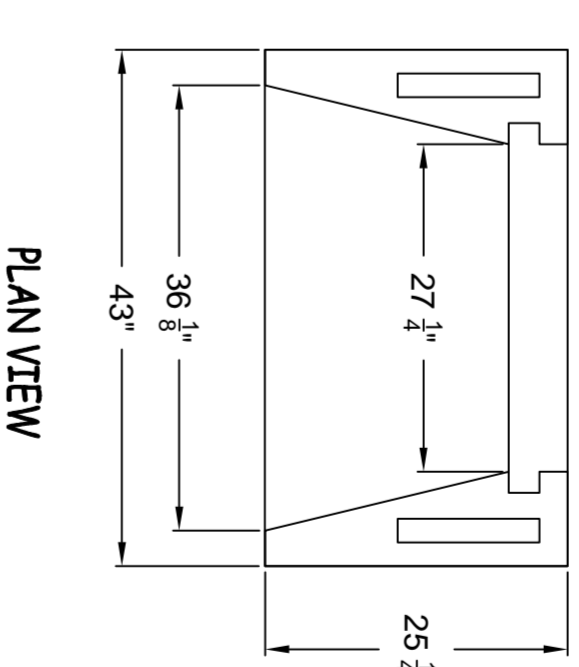
PLAN, SECTION and ELEVATION of ISOKERN STANDARD 42" FIRE-LITE

SCALE: 1/2" = 1'-0"



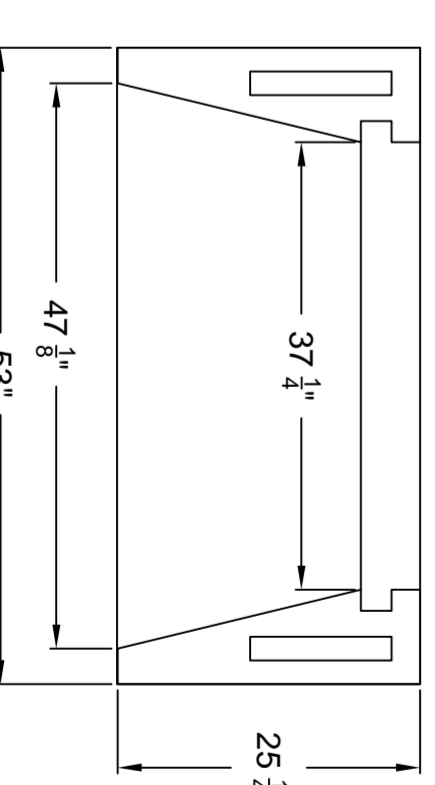
PLAN, SECTION and ELEVATION of ISOKERN STANDARD 36" FIRE-LITE

SCALE: 1/2" = 1'-0"



PLAN, SECTION and ELEVATION of ISOKERN 46" STANDARD FIRE-LITE

SCALE: 1/2" = 1'-0"



REVISIONS

BY

6899 PHILLIPS INDUSTRIAL BLVD
 JACKSONVILLE, FLORIDA 32256
 TEL (904) 363-3417
 FAX (904) 363-3408
 www.isokern.net



A PRODUCT OF EARTHCORE INDUSTRIES

STANDARD
 FIRE-LITE
 DETAILS/
 DIMENSIONS

DRAWN BY

JMK

RELEASE DATE

01/29/10

SCALE

3/4" = 1'-0"

REVNO

SHEET

SF1.0