

ISOKERN UNVENTED GAS LOG ENCLOSURE SPECIFICATIONS:

I. MANUFACTURER: %U

A. ISOKERN Fireplace and Chimney Systems, North American distribution by Earthcore Industries, Inc., Jacksonville, Florida (Telephone 800-642-2920).

II. PRODUCT DESCRIPTION:

- A. Modular refractory masonry precast fireplace and chimney components.
 1. Designed for field assembly as a masonry enclosure for an unvented decorative gas log.
 2. All interlocking parts necessary for assembly of a complete firebox.

III. MATERIALS:

- A. Light weight concrete of a proprietary mixture of Icelandic volcanic pumice aggregate and aluminate cement for precast firebox components.
 1. Compressive Strength: Firebox components: 972 psi.
 B. Premixed (dry) ISOKERN LIP mortar, masonry adhesive.
 1. Tensile strength: 807 psi; compressive strength: 2460 psi.
 2. ASTM 48261T.
 C. Standard 1 1/8" thick high temperature refractory brick to line firebox interior.

IV. INSTALLATION:

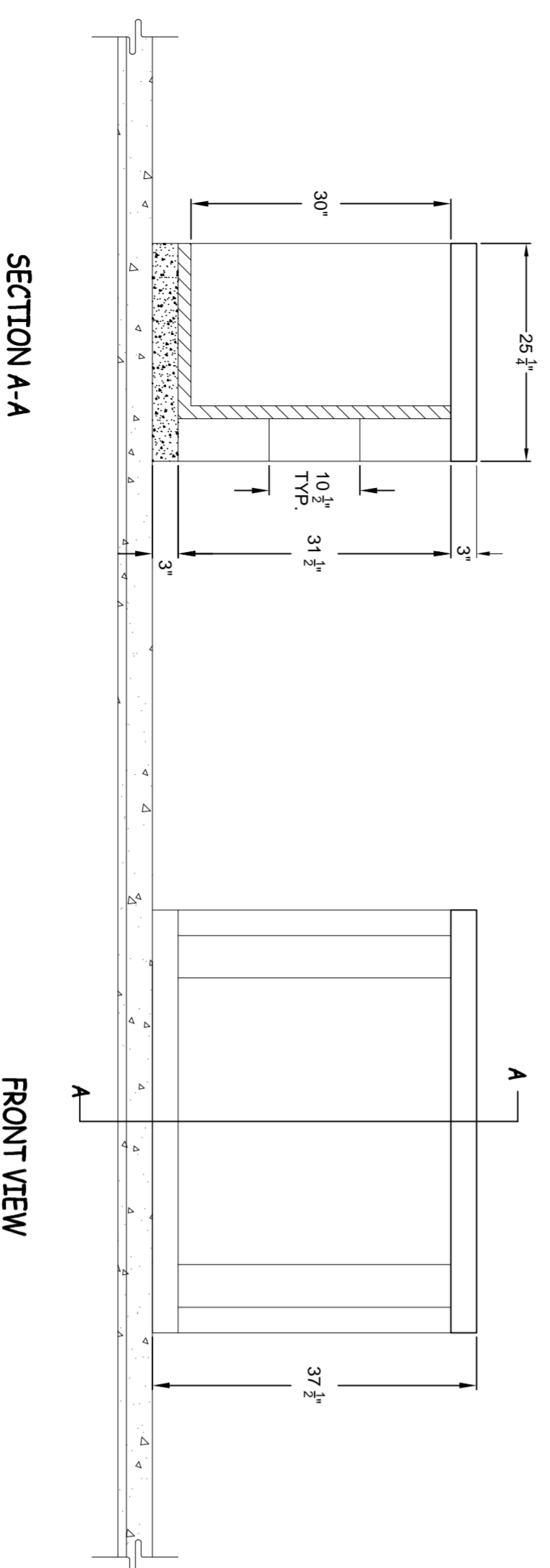
- A. Reference manufacturer's installation instructions for standard configurations, weights, sizes and installation details.
 B. Suitable masonry foundation or structural wood floor system.
 C. Unit to be assembled on site per manufacturer's illustrated instructions.
 1. Premixed ECI mortar is used at all joints between components.
 2. Firebox to be lined with minimum 1 1/8" thick rated fire brick.
 D. Standard fireplace and chimney units listed for "zero clearance" to uninsulated wood framing members.

V. CERTIFICATION:

- A. Warnock Hersey/Intertek Testing Services Report No. 13001A-764.
 B. Meets or exceeds IAS 2-97, ANSI Z21.91-2007.

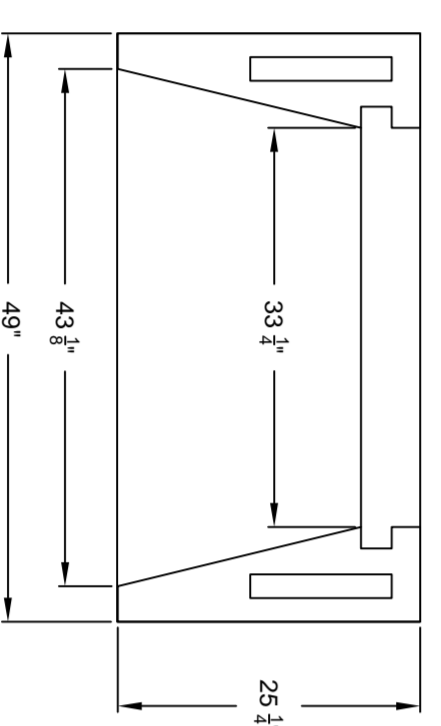
VI. CODE COMPLIANCE:

ICC No. ESR - 2316



PLAN, SECTION and ELEVATION of ISOKERN 42" [WIDE] UNVENTED GAS LOG ENCLOSURE

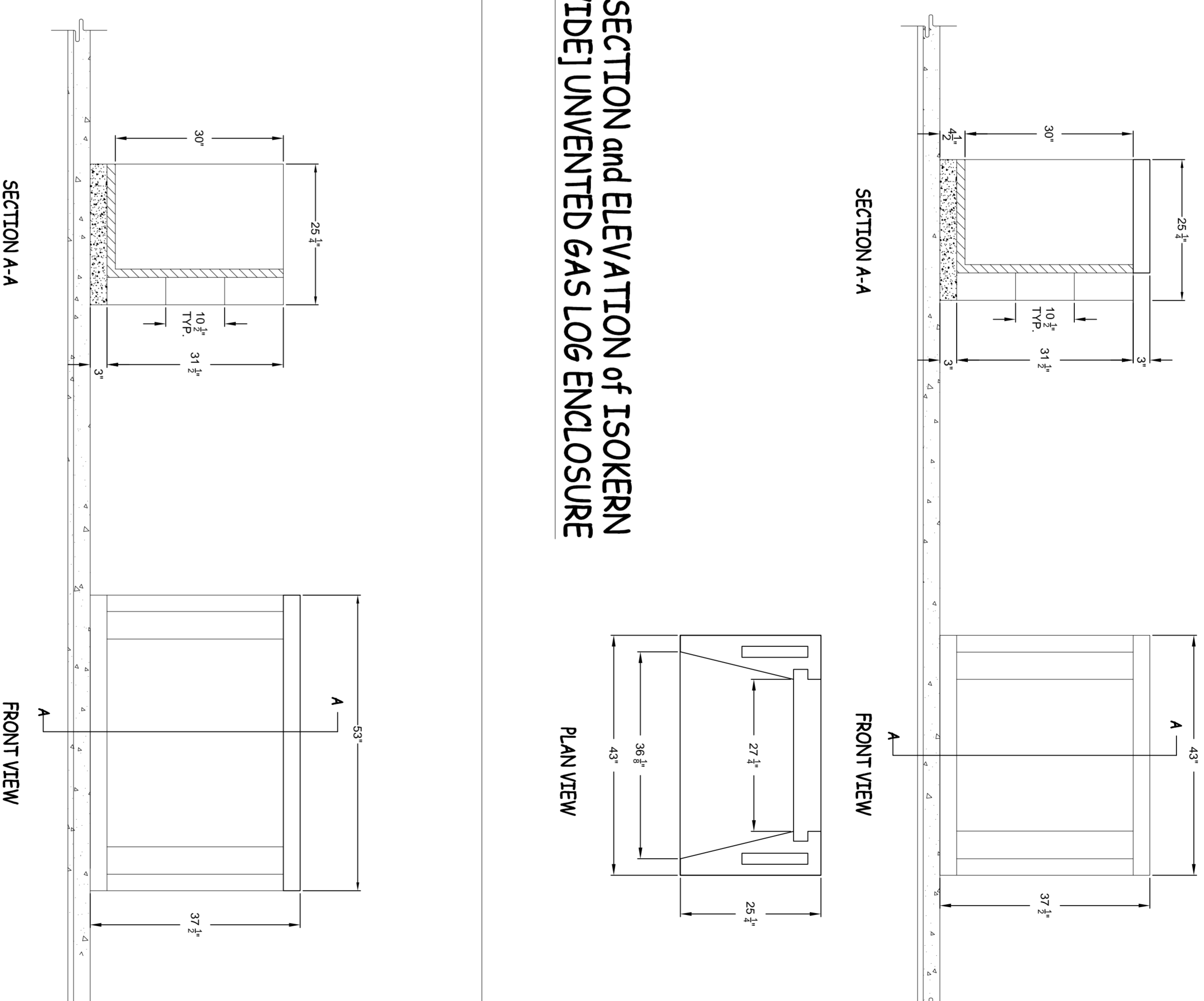
SCALE 3/4" = 1'-0"



PLAN VIEW

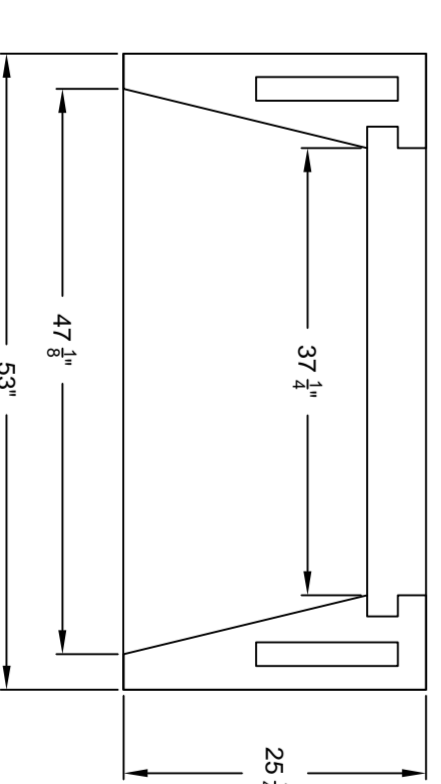
PLAN, SECTION and ELEVATION of ISOKERN 36" [WIDE] UNVENTED GAS LOG ENCLOSURE

SCALE 3/4" = 1'-0"



PLAN, SECTION and ELEVATION of ISOKERN 46" [WIDE] UNVENTED GAS LOG ENCLOSURE

SCALE 3/4" = 1'-0"



PLAN VIEW

REVISIONS

BY

6899 PHILLIPS INDUSTRIAL BLVD
 JACKSONVILLE, FLORIDA 32256
 TEL (904) 363-3417
 FAX (904) 363-3408
 www.isokern.net

ISOKERN
 Fireplaces and Chimney Systems

A PRODUCT OF EARTHCORE INDUSTRIES

FIREBOX
 DETAILS/
 DIMENSIONS

DRAWN BY
JMK

RELEASE DATE
09/01/09

SCALE
3/4" = 1'-0"

REV. NO.

SHEET

VF1.0